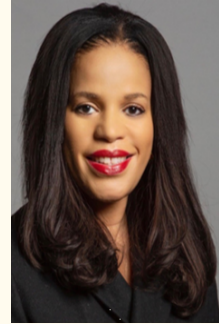




Claudia Webbe MP
Member of Parliament for Leicester East
House of Commons, London SW1A 0AA
Tel: 07973816885

The Rt Hon Jeremy Hunt MP
Chancellor of the Exchequer
House of Commons
London
SW1A 0AA



01.01.2024

Dear Jeremy,

RE: Emergency Energy Tariff

I'm writing regarding the urgent need to introduce an Emergency Energy Tariff.

This winter 2023-24, bills are expected to still be nearly twice what they were in 2021, while people have less ability to pay. In June Money Advice Trust estimated that 5.5 million adults are behind on their energy bills, and Citizens Advice found 7.8 million people borrowing to pay their energy bills in the first six months of 2023. Their research shows disabled people, single parents and low-income households will be the hardest hit this winter. End Fuel Poverty coalition has likewise raised that 38% of people from households where someone is under 5, pregnant, over 65 or with pre-existing health conditions think they won't or may not be able to afford to put the heating on at all.

I believe this is unacceptable and am worried that the situation will only worsen as the energy price cap has been raised by 5% from 1 January 2024 onwards.

End Fuel Poverty coalition has been calling for an Emergency Energy Tariff which would use the existing Energy Price Guarantee mechanism to fix the unit costs and standing charges for vulnerable groups at a lower level. I support their call and am very concerned that such measures were not included in the Autumn Statement 2023.

Furthermore, while I recognise that short-term support for the most vulnerable is essential, this will not be enough to bring down energy prices long-term. To achieve this, the government must prioritize a just shift from oil and gas to renewables, with a focus on enhancing the energy efficiency of homes and ensuring the energy sector serves the public, not just private profit.

Therefore, I strongly urge the government to commit to implementing an Emergency Energy Tariff to keep our community warm this winter, and to transitioning to renewable energy as a long-term solution.

Yours sincerely,

Claudia Webbe MP
Member of Parliament for Leicester East

For casework please email: claudia.webbe.mp@parliament.uk
Twitter: @claudiawebbe | <https://twitter.com/ClaudiaWebbe>
www.facebook.com/claudiaforLE
www.claudiawebbe.org